

ETUDES CARACTERISTIQUES N° 7

Trombone

P. Clodomir

Allegro con moto ♩ = 108

3

6

9

11

14

17

19

22

25

f *sf* *sf* *sf*

sf *f* *cresc.* *mf* *sf*

sf *sf* *sf*

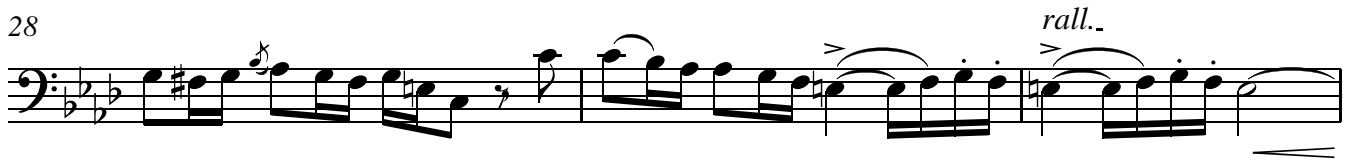
Sost. *p* *rall.*

A tempo *mf*

Trombone

2

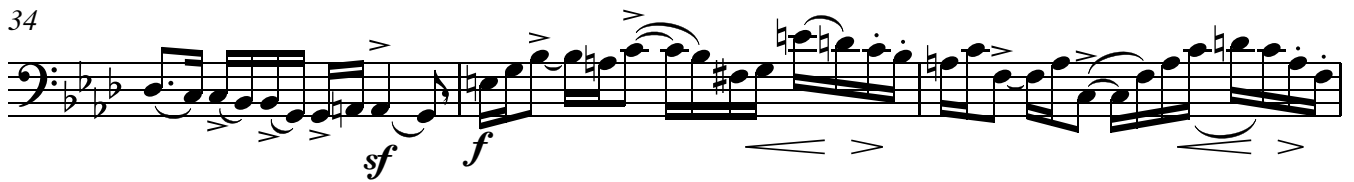
28



31

A tempo

34



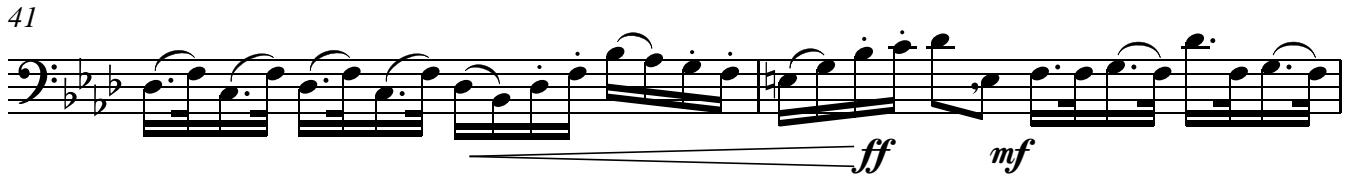
37



39



41



43



45



47

accel.

49



51

